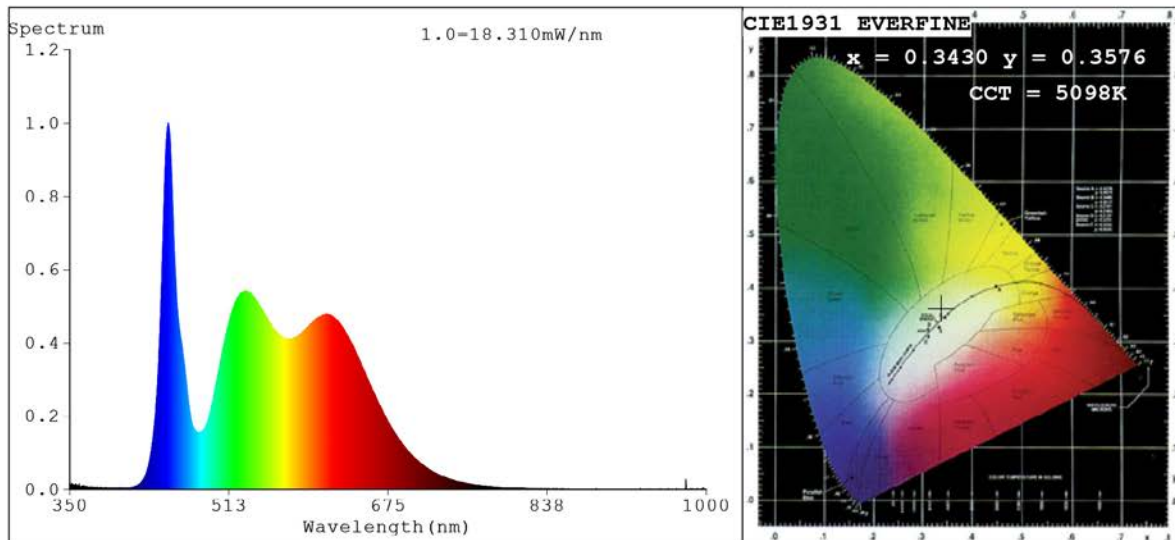


## Spectrum Test Report



### Color Parameters:

Chromaticity Coordinate:  $x=0.3430$   $y=0.3576$   $u'=0.2077$   $v'=0.4872$   
 CCT=5098K (Duv=0.0038) Dominant WL:Ld =567.7nm Purity=10.2%  
 Ratio:R=17.3% G=78.6% B=4.1%;;Peak WL:Lp=450.5nm FWHM=16.8nm  
 Render Index:Ra=91.1 CRI=86.4 TM30:Rf=89 Rg=101  
 R1 =95 R2 =91 R3 =86 R4 =92 R5 =93 R6 =88 R7 =94  
 R8 =90 R9 =67 R10=77 R11=89 R12=63 R13=94 R14=92 R15=92

### Photo Parameters:

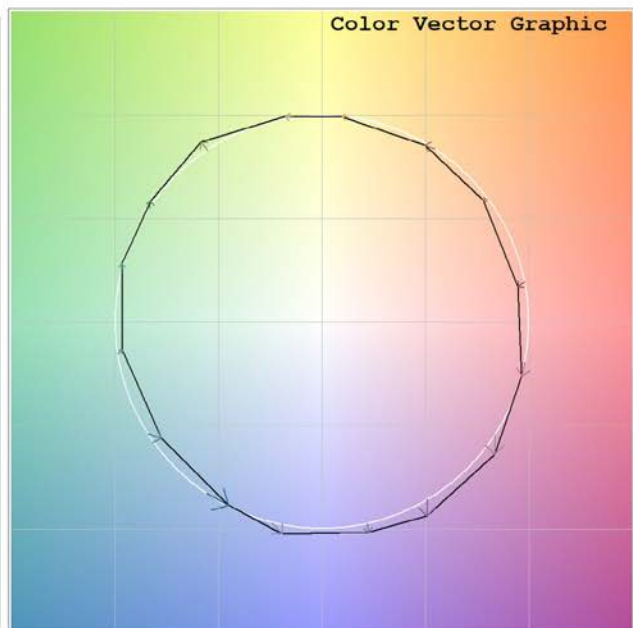
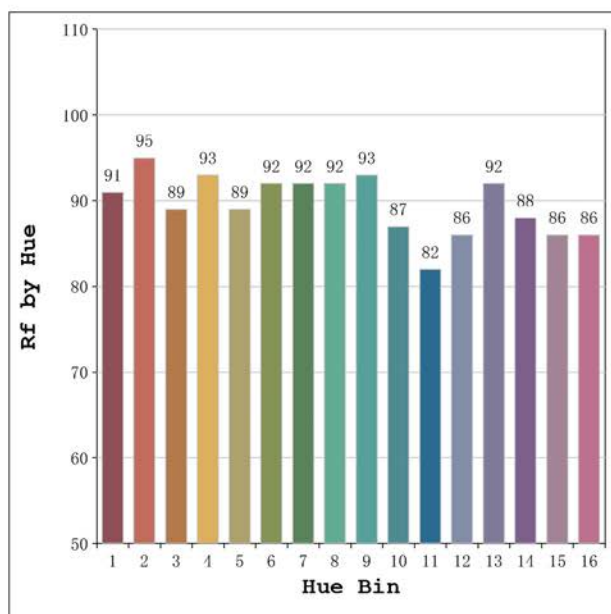
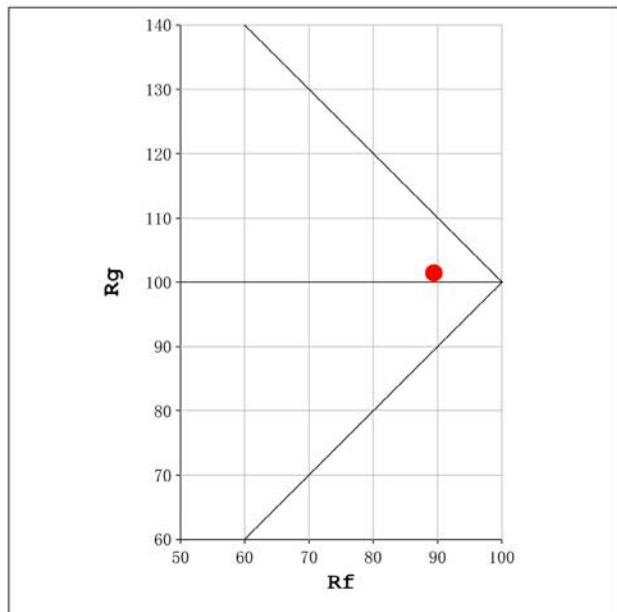
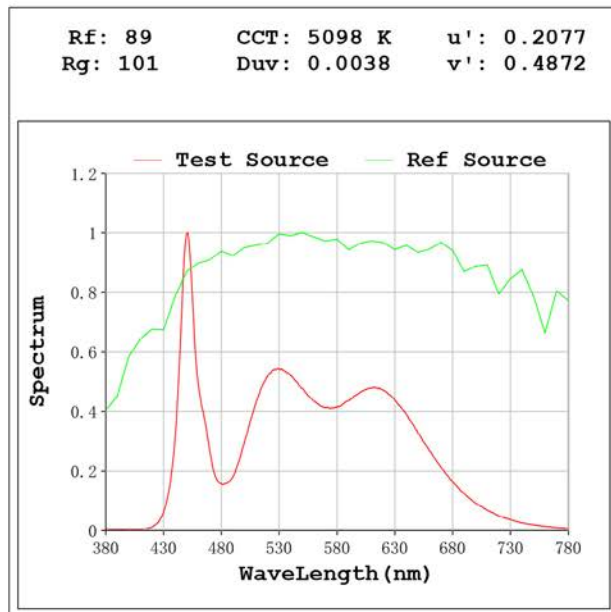
Flux = 591.6 lm Eff. : 118.41 lm/W Fe = 1.945 W

### Electrical parameters:

V = 23.998 V I = 0.2082 A P = 4.996 W PF = 1.000

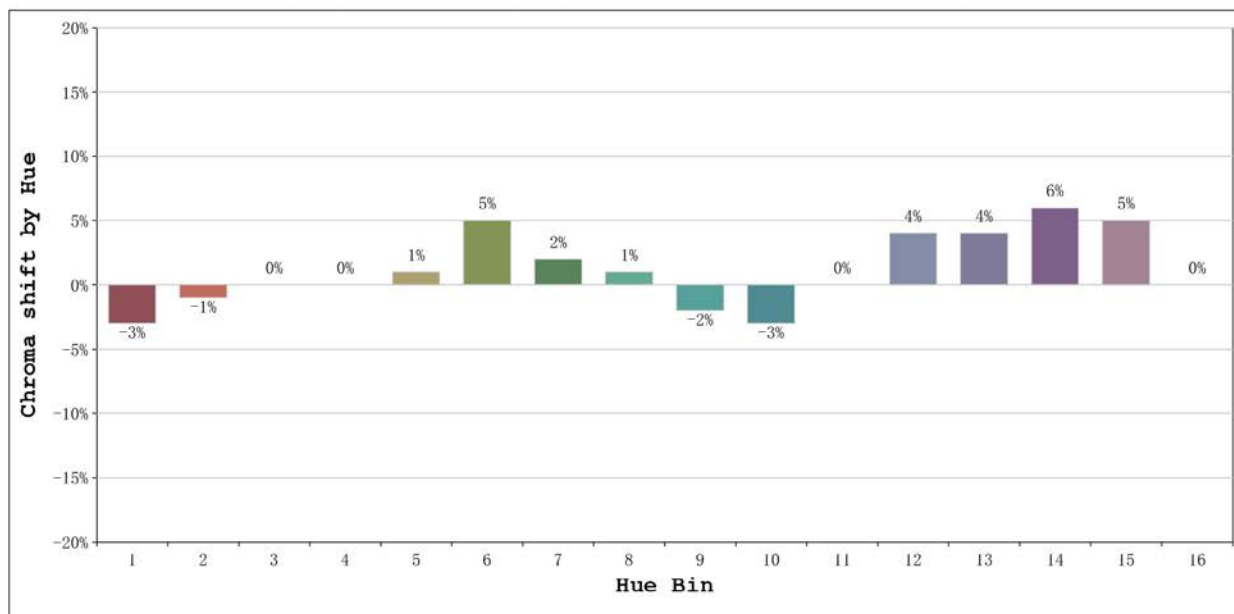
Status: Integral T = 2000 ms Ip = 46255 (71%)

Model:Ecoled Élite 5 Gold 5000	Number: 31.163
Tester:Sergio Carneros	Date:2025-02-12 13:06:24
Temperature:20Deg	Humidity:50%
Manufacturer:Luz Negra	Remarks:100cm de tira flexible



Model:Ecoled Élite 5 Gold 5000  
 Tester:Sergio Carneros  
 Temperature:20Deg  
 Manufacturer:Luz Negra

Number: 31.163  
 Date:2025-02-12 13:06:24  
 Humidity:50%  
 Remarks:100cm de tira flexible



			Graphic shift(%)	
Hue Bin	Hue Angle	Rf	Chroma	Hue
1	0.0° - 22.5°	91	-3	-1
2	22.5° - 45.0°	95	-1	0
3	45.0° - 67.5°	89	0	5
4	67.5° - 90.0°	93	0	3
5	90.0° - 112.5°	89	1	3
6	112.5° - 135.0°	92	5	1
7	135.0° - 157.5°	92	2	-2
8	157.5° - 180.0°	92	1	-2
9	180.0° - 202.5°	93	-2	0
10	202.5° - 225.0°	87	-3	5
11	225.0° - 247.5°	82	0	12
12	247.5° - 270.0°	86	4	6
13	270.0° - 292.5°	92	4	0
14	292.5° - 315.0°	88	6	-4
15	315.0° - 337.5°	86	5	-7
16	337.5° - 360.0°	86	0	-6

Model:Ecoled Élite 5 Gold 5000  
Tester:Sergio Carneros  
Temperature:20Deg  
Manufacturer:Luz Negra

Number: 31.163  
Date:2025-02-12 13:06:24  
Humidity:50%  
Remarks:100cm de tira flexible